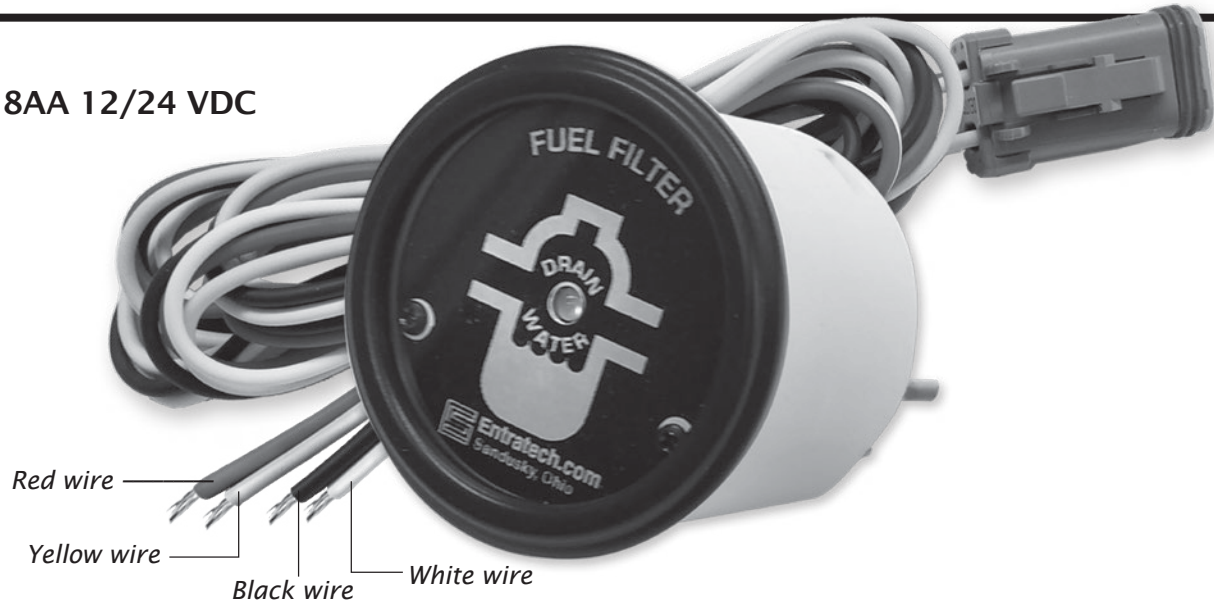




# Single Indicator Gauge

#110018AA 12/24 VDC



## INSTALLATION:

1. Connect Wire harness to Gauge
2. YELLOW WIRE from Gauge Harness connects to YELLOW WIRE from Sensor.
3. BLACK WIRE from Gauge Harness connects to BLACK WIRE from Sensor to negative terminal on battery (Ground).
4. RED WIRE from Gauge Harness connects to 1 AMP FUSE.

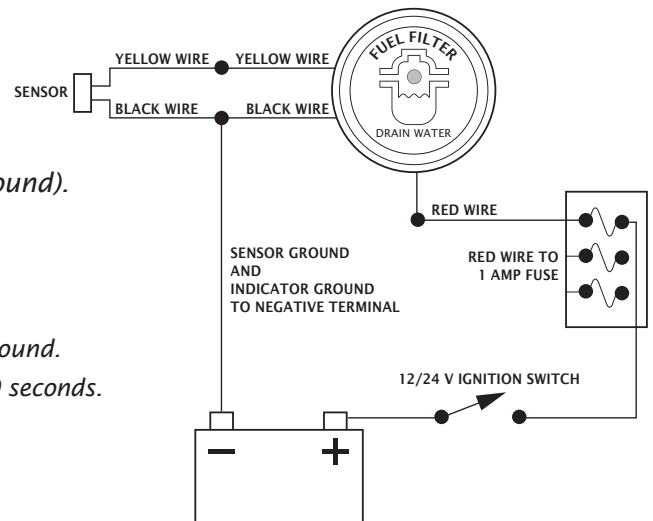
On initial power up there will be a few second "power on" test.

When water is detected there is a slosh delay for a few seconds.

Then the blue LED on the gauge will light and the internal beeper will sound.

To prevent annoying the operator the beeper will shut off after about 10 seconds. The Blue LED will continue to stay lit. The system will reset after the ignition switch is turned off.

All wires are 36 inches 18 gauge GXL.



## USE WITH THESE PRODUCTS:

### NYLON SENSORS

(1/2 x 20 thread)

WW002841AA: passive  
WW002811AA: 82.5K Ω  
WW002821AA: 220K Ω



HARNESS  
2-Wire (TE connector)

### NYLON SENSORS

(M14 x 2.0 thread)

WW002842AA: passive  
WW002812AA: 82.5K Ω  
WW002822AA: 220K Ω

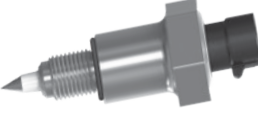


HARNESS  
2-Wire (TE connector)

### STAINLESS SENSOR

(1/2 x 20 thread)

110006AA: passive  
RACOR style



HARNESS  
2-Wire (DELPHI connector)

### STAINLESS SENSORS

(1/2 x 20 thread)

WW004841AA: passive  
WW004811AA: 82.5K Ω  
WW004821AA: 220K Ω



HARNESS  
2-Wire (DELPHI connector)

### STAINLESS SENSORS

(M14 x 2.0 thread)

WW004842AA: passive  
WW004812AA: 82.5K Ω  
WW004822AA: 220K Ω



HARNESS  
2-Wire (DELPHI connector)

SINGLE GAUGE: ES03202019